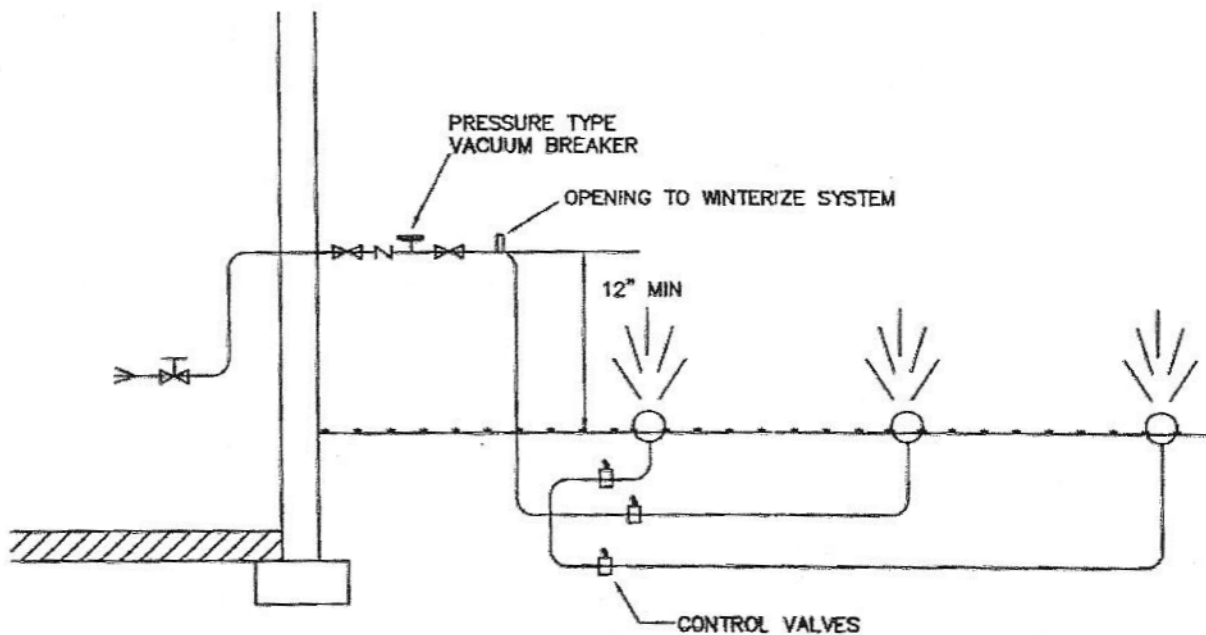
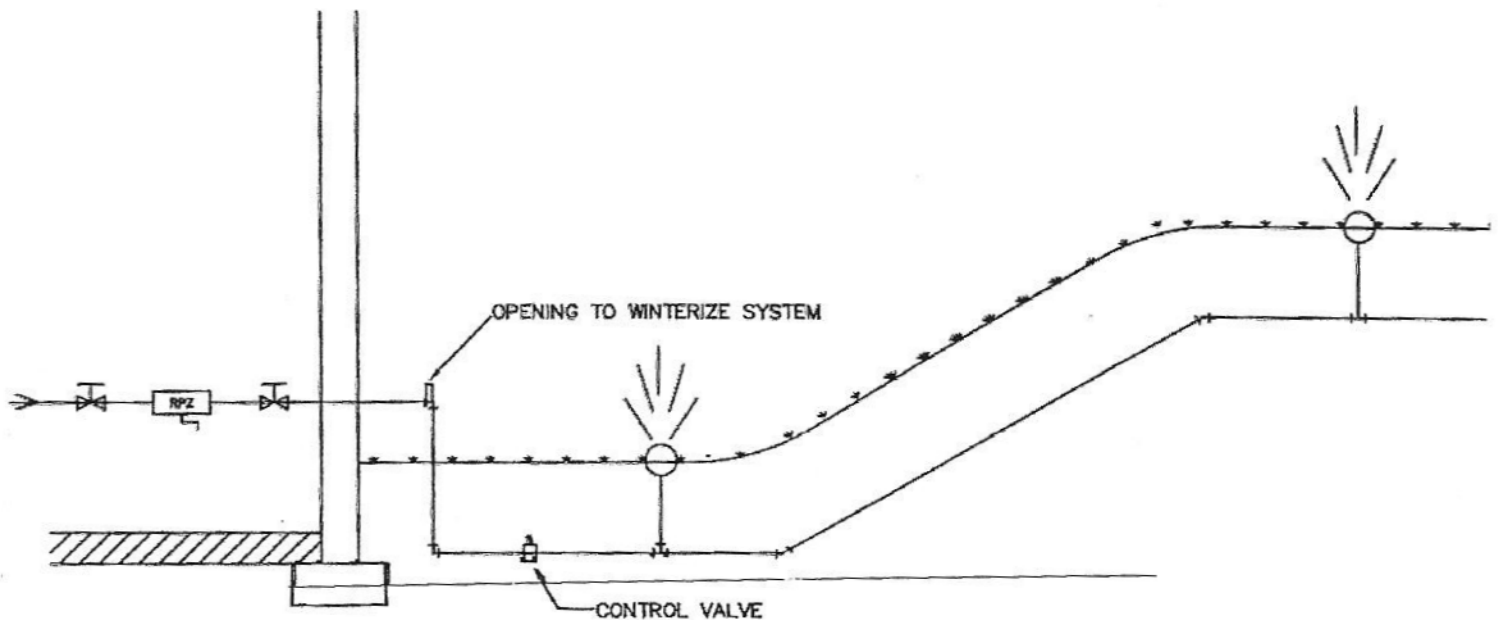


LAWN SPRINKLER SYSTEM



PRESSURE TYPE VACUUM BREAKER ON LAWN SPRINKLER SYSTEM MUST BE INSTALLED AT LEAST 12 INCHES ABOVE HIGHEST SPRINKLER OUTLET AND MAY BE SUBJECT TO CONSTANT STATIC PRESSURE.



A REDUCED PRESSURE ZONE TYPE BACKFLOW PREVENTER MUST BE INSTALLED ON LAWN SPRINKLER SYSTEMS WHEN ANY SPRINKLER OUTLET IS HIGHER THAN THE BACKFLOW PREVENTER. (MAY BE SUBJECT TO CONSTANT STATIC PRESSURE, BACK PRESSURE, AND BACK SYPHONAGE.)